



Dedicated to improving vehicle fun, safety & performance



# Installation Instructions

## Front Polyurethane Bushing for 200 Series (1975-1993)

ipd #109366, 125247, 109350



### SUGGESTED TOOLS

- Vise
- Jack
- Jack Stands
- Press
- Wrench/hand tools

### SAFETY WARNINGS



- Always support the vehicle with jack stands before working underneath
- Use only the parts supplied by ipd to install this kit
- Check ALL the fasteners for tightness before and after road testing the vehicle
- Do not use air impact wrench when re-installing bolts as stripped threads may result
- Follow all safety procedures when working with a hydraulic press

### REMOVAL

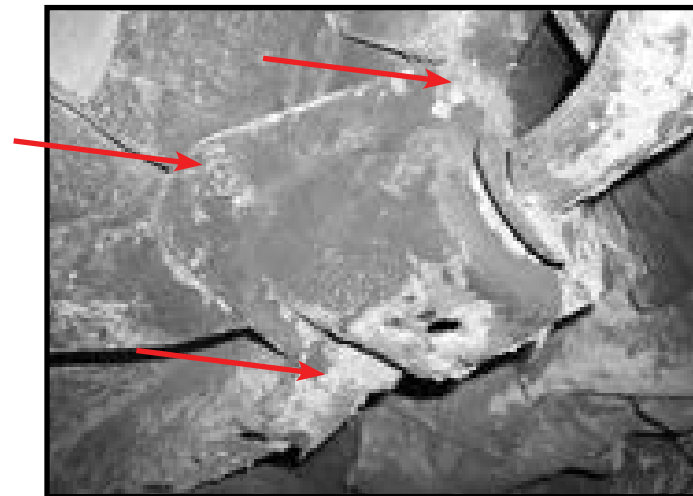
- 1 Loosen the lug nuts then raise and safely support the vehicle on jack stands. Be sure to allow the suspension to hang freely.
- 2 Remove the front wheels.

## INSTALLATION

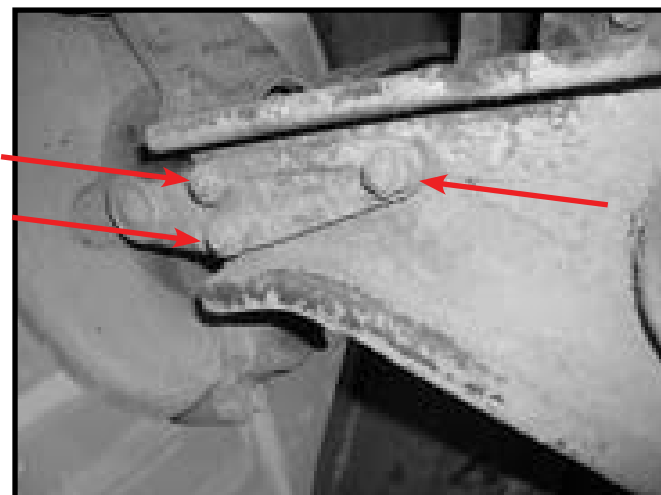
- 3 Remove the 17mm nut and bolt from the lower sway bar end link.



- 4 Remove the three 14mm bolts from the rear pocket bushing bracket.

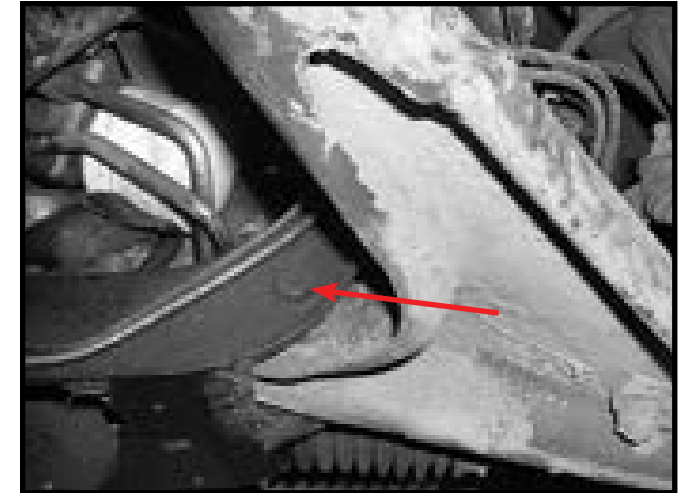


- 5 Remove the three 19 mm nuts from the lower ball joint.



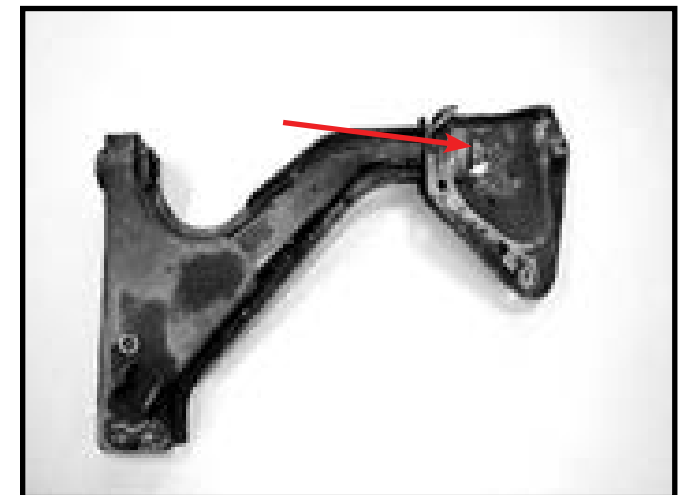
## INSTALLATION

- 6 Remove the 19mm nut and 17mm bolt from the inner control arm bushing.



- 7 Remove the lower control arm from the vehicle.

- 8 Remove the 19mm nut from the inside of the rear pocket bushing bracket.



- 9 Separate the pocket bushing bracket from the lower control arm.



## INSTALLATION

- 10** Knock the pocket bushing from its' bracket using a hammer. Note that the bushing has a folded lip on one end and will only come out one way.



- 11** Install the supplied pocket bushing sleeve into its' bracket. Note the beveled edge in the bracket, install the new sleeve into this side. Hold the bracket in a vise and using a hammer with light to moderate force, knock the sleeve until it is fully seated into the bracket.



- 12** Using a small amount of the supplied grease install the new pocket bushing into the bracket/sleeve assembly.



## INSTALLATION

- 13** Apply some of the included grease to the inside of the bushing and install the inner sleeve into the bushing. You may need to use a vise to help press the sleeve into place.

- 14** Set this assembly aside and begin work on the lower control arm

- 15** To press out the bushing in the lower control arm you will need a section of tube with a 1.75 inch ID about 3 inches long and another section with a 1.25 inch OD (a 15/16 socket is a close fit).

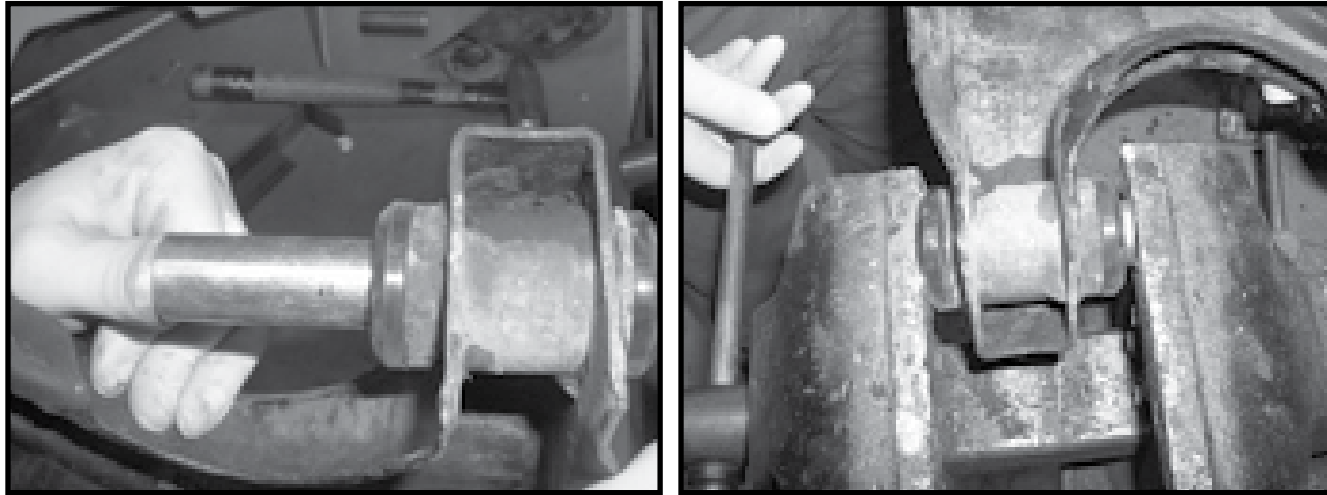
- 16** Setup the press according to the picture. Be advised this bushing has a folded lip and will only come out one way. This bushing will require moderate to heavy press force to remove it. The larger tube is used outside the lower control arm the smaller tube inside the arm. **BE SURE TO USE APPROPRIATE SAFETY EQUIPMENT INCLUDING, BUT NOT LIMITED TO, SAFETY GLASSES, GLOVES, AND HEARING PROTECTION.**



- 17** With the old bushing pressed out take each half of the new polyurethane bushing and install into each side of the lower control arm. Apply some of the included grease into the interior of the bushing and install the inner sleeve. The grease should go on the inside and outside of the poly bushing. You may need to use a vise to help press the sleeve into place.



## INSTALLATION



- 18** Begin assembling the pocket bushing bracket and lower control arm. Slide the bracket over the threaded rod on the control arm and be sure to use the included cup washer, beveled side toward the bushing, and the original washer and tighten the nut to 41 ft lbs.



- 19** Install the lower control arm assembly into the vehicle.
- 20** Install and tighten the 17mm bolt and 19mm nut on the inner control arm bushing and torque to 55 ft lbs.
- 21** Install and tighten the three 14mm bolts on the rear pocket bushing bracket and torque to 30 ft lbs.
- 22** Install and tighten the three 19mm nuts on the lower ball joint and torque to 85 ft lbs.
- 23** Install and tighten the 17mm bolt and 17mm nut on the lower end link.
- 24** Reinstall the wheel and tighten the lug nuts.

Typically an alignment is not necessary after this type of part replacement. It is a good idea to inspect the front end components for looseness after the new bushings are in place. Loose wheel bearings and ball joints will be much more apparent with new polyurethane bushings.

## WARRANTY

### **One Year Limited Warranty**

ipd warrants to the original purchaser that the parts manufactured and/or sold by ipd (the Product) is free from defects in material and workmanship under normal use. ipd warrants that the Product will perform substantially in accordance with the specifications set forth in the documentation provided with it. The above express warranties are made for a period of the lesser of 12,000 miles or 12 months from the date the Product is installed in your vehicle.

Any improper use, operation beyond capacity, substitution of parts not approved by ipd in writing, any alteration or repair by others, or any removal, defacing or altering of the identification shall void this warranty. There is no warranty on high-performance or race related parts due to the nature of usage.

The purchaser shall notify ipd at 1-800-444-6473 of any defect within the warranty period no later than thirty (30) days after purchaser discovers the defect. Should any failure to conform to this warranty appear within the warranty period, ipd shall, on notification, correct the nonconformity at its option, either by repairing any defective part, or by making available, FOB ipd's plant, a repaired or replacement part. The purchaser must insure any defective item being returned because ipd does not assume risk of loss or damage while in transit. No payment or reimbursement shall be made for installation, removal, transportation or other charges. The remedies set forth in this instrument are exclusive, and the liability of ipd with respect to any sale shall not exceed the price of the product on which the liability is based.

EXCEPT AS STATED OTHERWISE IN THIS WARRANTY, ipd MAKES NO WARRANTIES, EXPRESS OR IMPLIED, INCLUDING WITHOUT LIMITATION, ANY WARRANTY OF MERCHANTABILITY OR FITNESS FOR A PARTICULAR PURPOSE. Some states do not allow limitations on how long an implied warranty lasts, so the above limitation may not apply to you. ipd shall not in any case be liable for special, incidental, consequential, indirect, or other similar damages arising from any breach of these warranties even if ipd or its agent has been advised of the possibility of such damages. Some states do not allow the exclusion or limitation of incidental or consequential damages so the above limitation or exclusion may not apply to you.

This warranty is governed by the laws of the State of Oregon.

