



Dedicated to improving vehicle fun, safety & performance

Installation Instructions

Skid Plate for 850 and 70 Series

ipd #53850, 5370AWD



INTRODUCTION

Please read through these instructions carefully before you begin for best results.

SUGGESTED TOOLS

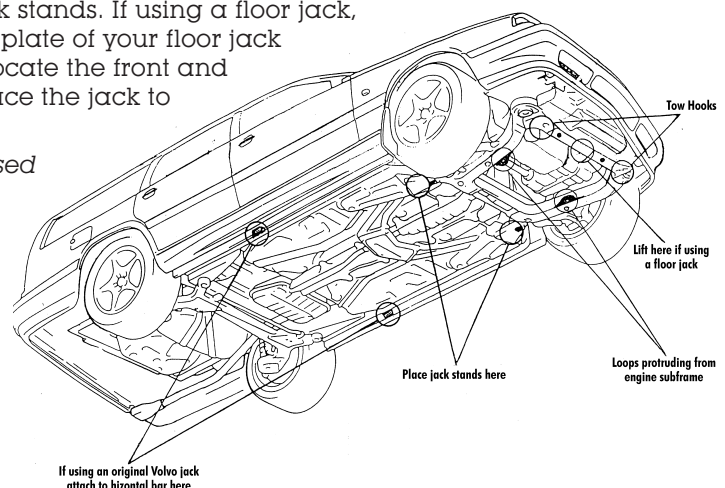
- Floor jack
- Jack stands
- 13mm or 1/2" open end wrench or socket
- Ratchet
- 3/16" Allen wrench (included)

INSTALLATION

- 1 Raise front end of car and support with jack stands. If using a floor jack, place a 6" length of 2x4 wood on the lifting plate of your floor jack to prevent damage to the cross member. Locate the front and center of the engine cross member and place the jack to lift at this point.

Note: The original Volvo jack can also be used to raise one side of the car at a time. Carefully place jack stands and remove jack. See your owners' manual for safe and proper use of the Volvo jack.

Be sure to use the jacking points and jack stand locations to prevent damage to the body. If using a hoist, keep in mind that this Volvo is front wheel drive and is front heavy. Lift arm positioning is important.



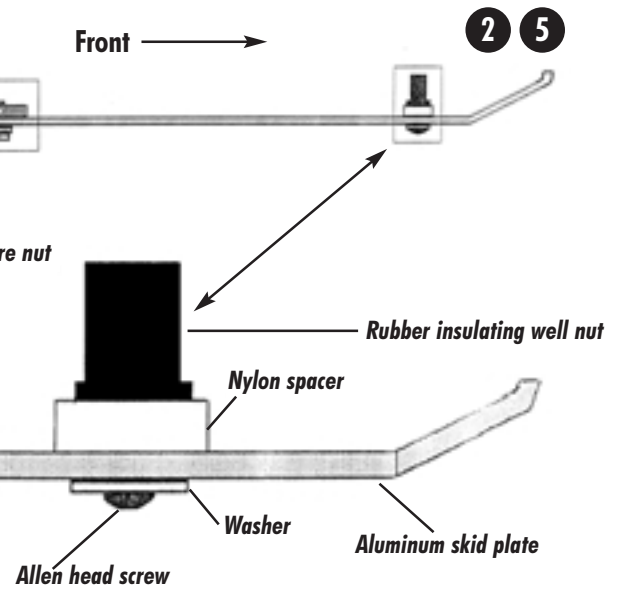
INSTALLATION

- 2 Assemble the front mounting hardware onto plate as shown. Hand tighten only.

- 3 Insert tab into the opening on the front side of the rear section of the engine subframe.

- 4 Once the rear tab has been positioned into the subframe as described above, position the plate so that the 2 rubber well nuts line up and go into the holes in the front of the engine subframe.

While holding the plate firmly against the subframe, carefully tighten the Allen head bolts. This causes the rubber to expand in the holes and holds the plate in place. You will feel some resistance while tightening. Stop when it increases. DO NOT OVERTIGHTEN.

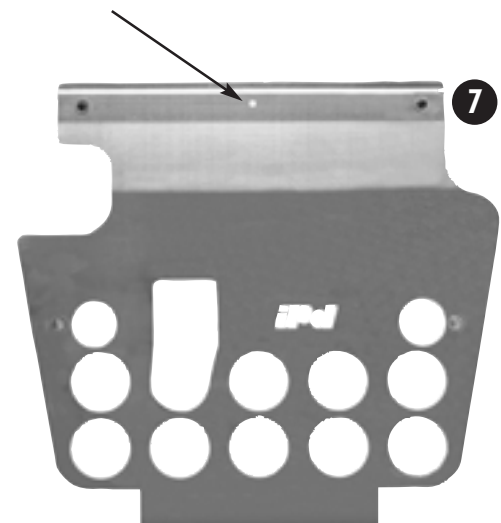


- 5 Install the final mounting hardware as shown. Be sure that the large square nut is centered over the hole in the loop protruding from the engine subframe. Tighten snugly. Apply Loc-Tite Blue to the fastener threads for best results.

- 6 The relatively small fasteners and subsequent low torque prevents the use of a standard torque wrench. Use common sense and don't overtighten. If you're unsure of how tight is tight enough, seek professional installation. The rubber wellnuts will tighten several turns with some resistance and then the resistance will increase sharply. Stop tightening at this point. Make sure that the well nut is doing it's job properly, holding the plate firmly to the engine subframe. If it is not, loosen the well nut and repeat Step 4, paying particular attention to hold the plate firmly against the subframe while tightening.

- 7 A hole is in the skid plate located between the two wellnut holes. If the well nuts do not hold adequately, you can drill a hole through the subframe for a sheet metal screw (not supplied). Be careful to only drill the frame, not the radiator.

Installation is now complete. Oil changes and normal service operations are not affected by the skid plate.



WARRANTY INFORMATION

One Year Limited Warranty

ipd warrants to the original purchaser that the parts manufactured and/or sold by **ipd** (the Product) is free from defects in material and workmanship under normal use. **ipd** warrants that the Product will perform substantially in accordance with the specifications set forth in the documentation provided with it. The above express warranties are made for a period of the lesser of 12,000 miles or 12 months from the date the Product is installed in your vehicle.

Any improper use, operation beyond capacity, substitution of parts not approved by **ipd** in writing, any alteration or repair by others, or any removal, defacing or altering of the identification shall void this warranty. There is no warranty on high-performance or race related parts due to the nature of usage.

The purchaser shall notify **ipd** at 1-800-444-6473 of any defect within the warranty period no later than thirty (30) days after purchaser discovers the defect. Should any failure to conform to this warranty appear within the warranty period, **ipd** shall, on notification, correct the nonconformity at its option, either by repairing any defective part, or by making available, FOB **ipd's** plant, a repaired or replacement part. The purchaser must insure any defective item being returned because **ipd** does not assume risk of loss or damage while in transit. No payment or reimbursement shall be made for installation, removal, transportation or other charges. The remedies set forth in this instrument are exclusive, and the liability of **ipd** with respect to any sale shall not exceed the price of the product on which the liability is based.

EXCEPT AS STATED OTHERWISE IN THIS WARRANTY, **ipd** MAKES NO WARRANTIES, EXPRESS OR IMPLIED, INCLUDING WITHOUT LIMITATION, ANY WARRANTY OF MERCHANTABILITY OR FITNESS FOR A PARTICULAR PURPOSE. Some states do not allow limitations on how long an implied warranty lasts, so the above limitation may not apply to you. **ipd** shall not in any case be liable for special, incidental, consequential, indirect, or other similar damages arising from any breach of these warranties even if **ipd** or its agent has been advised of the possibility of such damages. Some states do not allow the exclusion or limitation of incidental or consequential damages so the above limitation or exclusion may not apply to you.

This warranty is governed by the laws of the State of Oregon.