



PI-391 • 02/10

*Dedicated to improving vehicle fun, safety & performance*



# Installation Instructions

## B4 Servo Cover Update

S60 2002-2009, V70 2001-2007

ipd #30751262



## SUGGESTED TOOLS

- Snap ring pliers
- Flat blade screwdriver
- Standard pliers

## SAFETY WARNINGS



- Always support the vehicle with jack stands before working underneath
- Use only the parts supplied by ipd to install this kit
- Check ALL the fasteners for tightness before and after road testing the vehicle
- Do not use air impact wrench when re-installing bolts as stripped threads may result

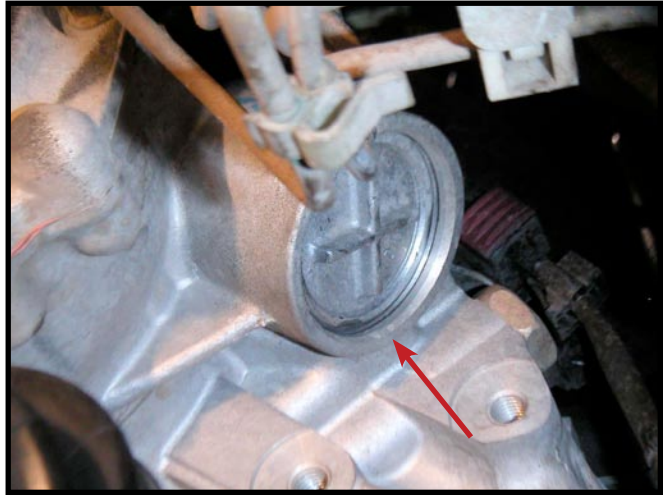
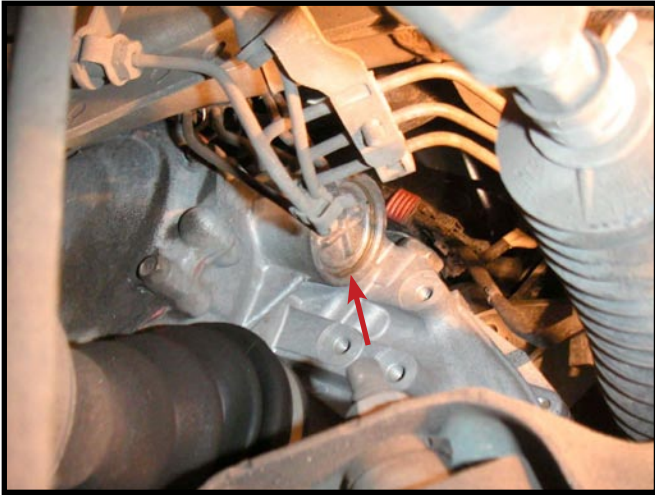
## REMOVAL

- 1 Safely support the vehicle and remove the driver's side (LHD) wheel.



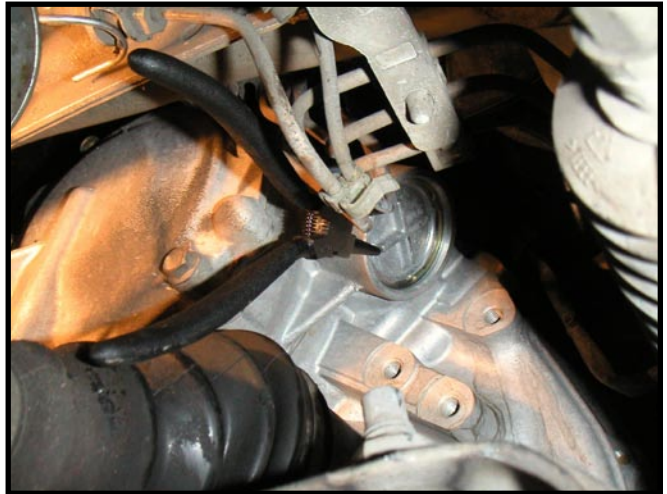
# REMOVAL

- 2** Locate the B4 servo on the back side of the transmission.

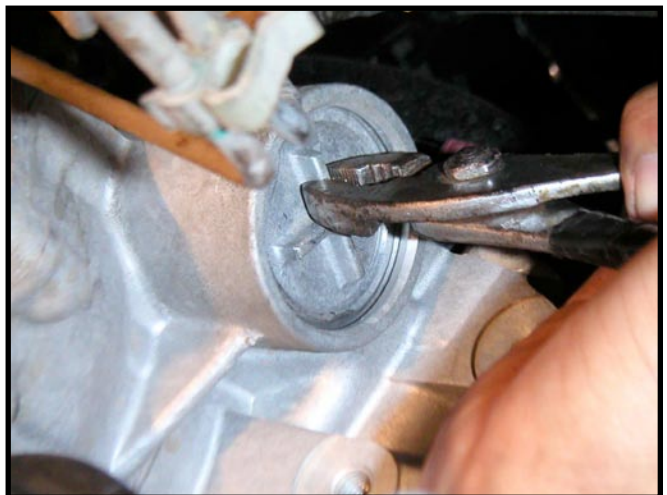


- 3** Clean the area to prevent any entry of debris or dirt during service.

- 4** Using snap ring pliers and remove the snap ring as shown.

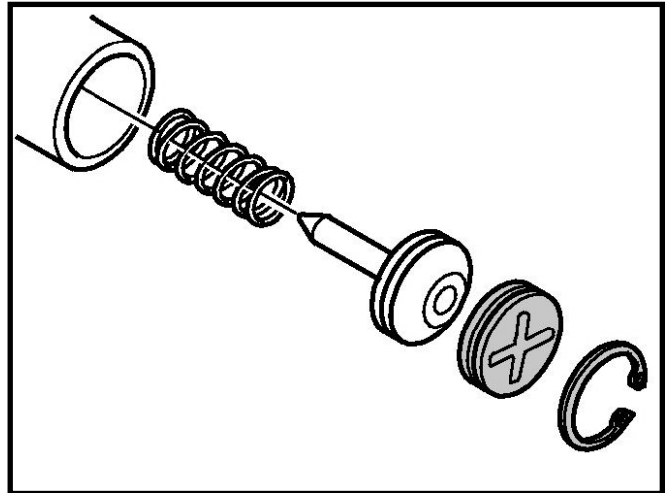


- 5** Use pliers to wiggle the plug free of the transmission case, a twisting motion will work best.



## REMOVAL

- 6 Remove the B4 piston and spring from the transmission.



## INSTALLATION

- 7 Install two of the O-rings from the kit onto the replacement cover. Use some transmission fluid to lubricate them. Be sure to install the O-rings on the top and bottom groove of the cover, leave the center groove bare.



- 8 Use the remaining O-ring from the kit to replace the O-ring on the B4 piston.





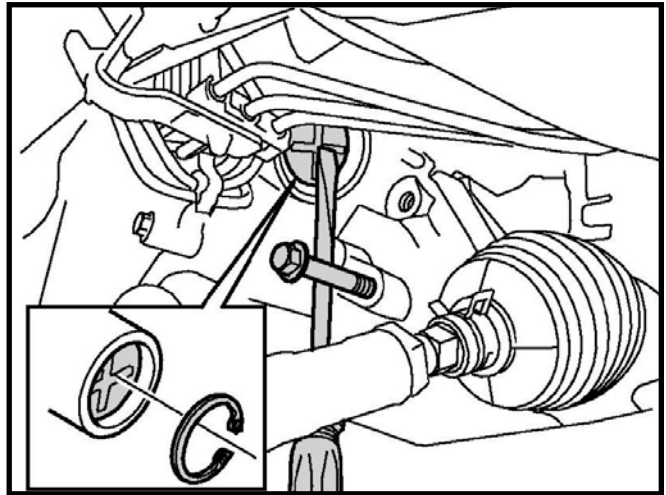
# INSTALLATION

- 9 Assemble the B4 piston and new cover.



- 10 Insert the B4 piston and cover into the transmission and push them in far enough to allow the snap ring to be re-inserted.

**Note the picture below, use a 10mm bolt to act as a fulcrum against a screwdriver to aid in compressing the piston and cover.**



- 11 Reinstall the driver's side wheel. (90 ft lbs for steel wheels, 100 ft/lbs for alloy wheels)
- 12 Start the engine and with your foot on the brake and the vehicle stationary shift the gear selector from Park, Reverse, Drive, Low with a 30 second delay between each selection.
- 13 Recheck the transmission fluid level and adjust as necessary.
- 14 In an area where it is safe to do so, perform the following adaptation procedure; Drive the car with steady throttle opening allowing the transmission to shift up to third gear. Continue to perform 2nd to 3rd gear up shifts at different throttle openings but do not exceed 75% throttle opening. You can manually select the gears as well if you're gear selector has that feature.
- 15 Allow the vehicle to shift from 4th to 3rd during the adaptation while coasting under slight brake application.

# INSTALLATION

- 16** This procedure allows the air to be bled from the system and helps to encourage proper TCU adaptation with the new B4 update kit.
- 17** Expect the adaptation to occur over a period of 2 to 3 driving cycles and be advised, shifting may not feel 100% normal until that time has passed.

# WARRANTY

## ***One Year Limited Warranty***

ipd warrants to the original purchaser that the parts manufactured and/or sold by ipd (the Product) is free from defects in material and workmanship under normal use. ipd warrants that the Product will perform substantially in accordance with the specifications set forth in the documentation provided with it. The above express warranties are made for a period of the lesser of 12,000 miles or 12 months from the date the Product is installed in your vehicle.

Any improper use, operation beyond capacity, substitution of parts not approved by ipd in writing, any alteration or repair by others, or any removal, defacing or altering of the identification shall void this warranty. There is no warranty on high-performance or race related parts due to the nature of usage.

The purchaser shall notify ipd at 1-800-444-6473 of any defect within the warranty period no later than thirty (30) days after purchaser discovers the defect. Should any failure to conform to this warranty appear within the warranty period, ipd shall, on notification, correct the nonconformity at its option, either by repairing any defective part, or by making available, FOB ipd's plant, a repaired or replacement part. The purchaser must insure any defective item being returned because ipd does not assume risk of loss or damage while in transit. No payment or reimbursement shall be made for installation, removal, transportation or other charges. The remedies set forth in this instrument are exclusive, and the liability of ipd with respect to any sale shall not exceed the price of the product on which the liability is based.

EXCEPT AS STATED OTHERWISE IN THIS WARRANTY, ipd MAKES NO WARRANTIES, EXPRESS OR IMPLIED, INCLUDING WITHOUT LIMITATION, ANY WARRANTY OF MERCHANTABILITY OR FITNESS FOR A PARTICULAR PURPOSE. Some states do not allow limitations on how long an implied warranty lasts, so the above limitation may not apply to you. ipd shall not in any case be liable for special, incidental, consequential, indirect, or other similar damages arising from any breach of these warranties even if ipd or its agent has been advised of the possibility of such damages. Some states do not allow the exclusion or limitation of incidental or consequential damages so the above limitation or exclusion may not apply to you.

This warranty is governed by the laws of the State of Oregon.

