

Soft loader Quick Start “Cheat Sheet”

Here are some notes that you should read and understand prior to beginning the upgrade process as well as screen shots of the soft loading process.

Once you receive your soft loader file back from ipd, open it up and extract it. A shortcut icon will be placed on your desk top “MTE soft loader” Clicking this will open up the soft loader application.

Preparing to soft load the car

Plan to spend about 20-30 minutes for the process, so be sure the car is parked so that you will not have to move and where you will be free from distractions.

Position your battery charger so that it won't be disturbed by friends, family etc, and connect to car as shown in the video. Set it to charge at 10-20 amps with a timer setting that will span your soft loading time. We suggest setting it to "constant" vs. a timer setting as you will invariably get interrupted and next thing you know, you are in the middle of soft loading and realize that the timer has expired on your battery charger.

Now connect the OBD II connector to your car as shown in the video and route the cables up and over the steering column to prevent it from being disconnected when getting in and out of the car. At this time also make sure that the OBD cable is securely connected to the adapter and that the USB cable is also securely connected to the adapter. It's not a bad idea to tape the connection of the USB cable to the adapter to prevent accidental disconnection. Connect the USB cable to your laptop.

Run the AC power cord for your laptop out the passenger side door to prevent it from being disturbed as you enter and exit the car.

Please note that on models equipped with 4C, it is normal for the 4C dash lights to flash during the soft loading process.

Prior to beginning the soft load process be sure that you have disabled all hibernation and power saving functions on your PC to prevent interruption of communication. If your PC goes into hibernation or power save mode, it could corrupt the transfer of data and lead to a no start condition.

Flashing dash lights etc.

It is normal to have some dash lights flash momentarily when the download is complete and possibly at the first key cycle (starting the car), but these should all go away at start up. On rare occasions a flashing ABS light may be seen for two key cycles. On some models, a message may be displayed in the drivers information display indicating “Brake System Failure” As above, this warning should resolve itself in 1-2 key cycles.

We recommend checking for and erasing diagnostic trouble codes from your car prior to performing the soft load as it is not uncommon for a car to have several codes set and you might want to know about them prior to beginning your soft load. It's also recommended that you check for and erase any trouble codes that may have been set upon completion of the soft loading process.

Read Car button, Settings Button and help Buttons?

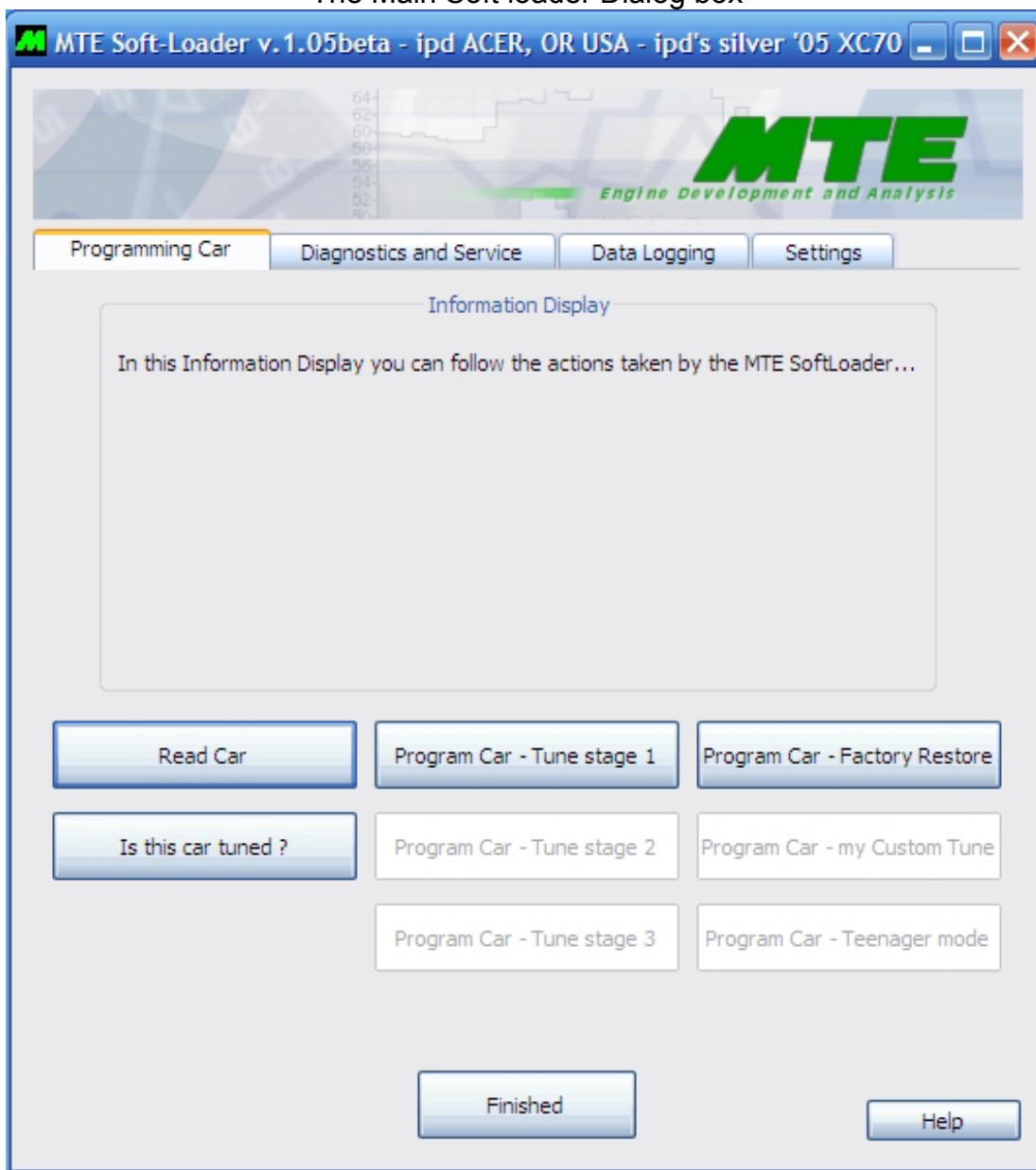
At this time the Read car button serves no function. Initially the Vehicle identification process was included in the Soft loader application, but for simplicity we decide to make it a separate application. The button will be removed in a new release that you will get a copy of soon. The settings Button is for future expansion and is non functioning at this time. The Help buttons also do not have any files attached at this time. We will be releasing an update that you will get free of charge soon that will have functioning help buttons.

Data logging & Diagnostics

The data logging shell will display data prior to soft loading, but it will not be properly interpreted until the car has been soft loaded. After soft loading, the data logging function will perform properly. You can

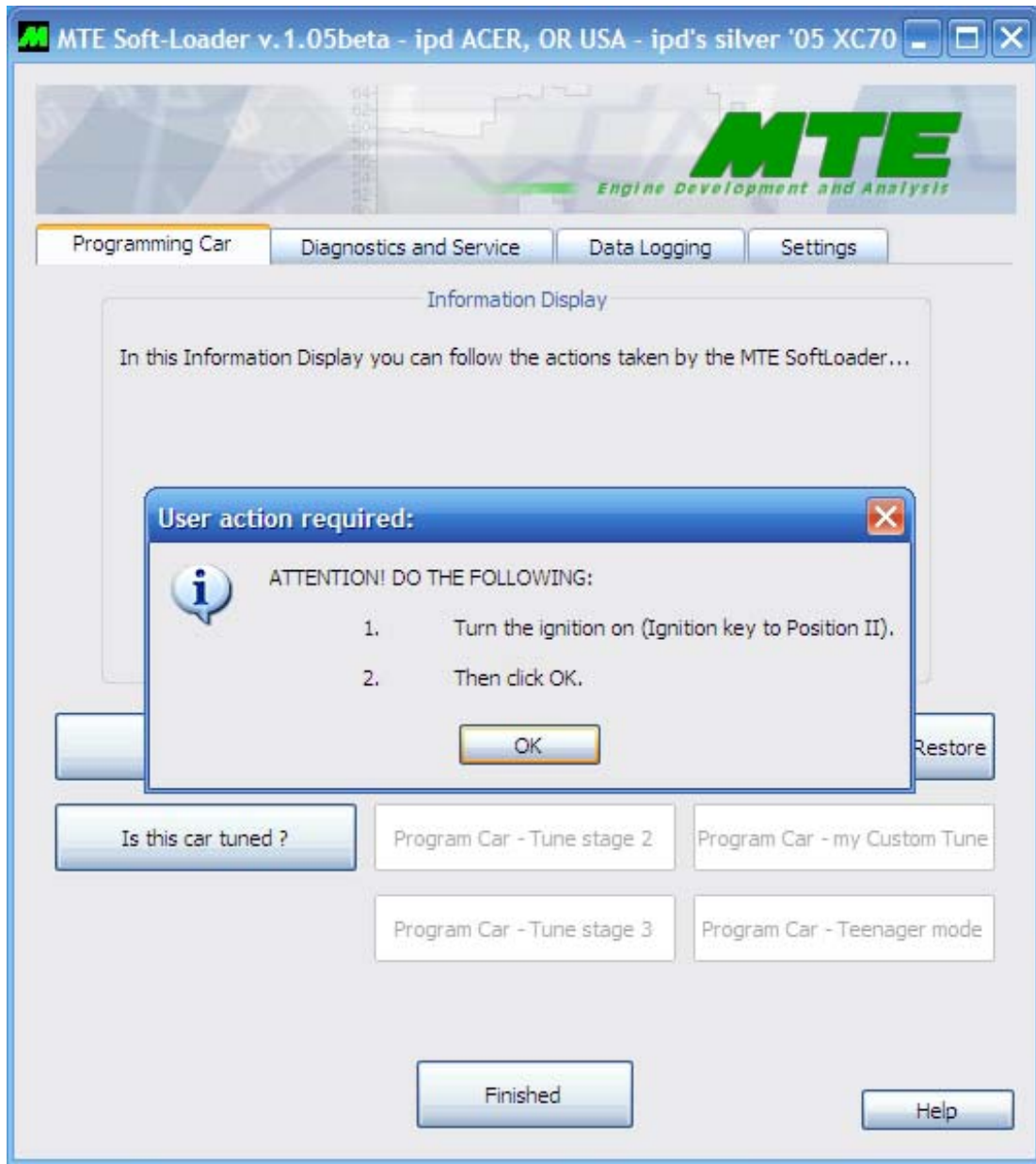
soft load back to stock if you want to do some before and after comparisons for example. Diagnostics will work prior to soft loading

Screen Shot 1:
The Main Soft loader Dialog box

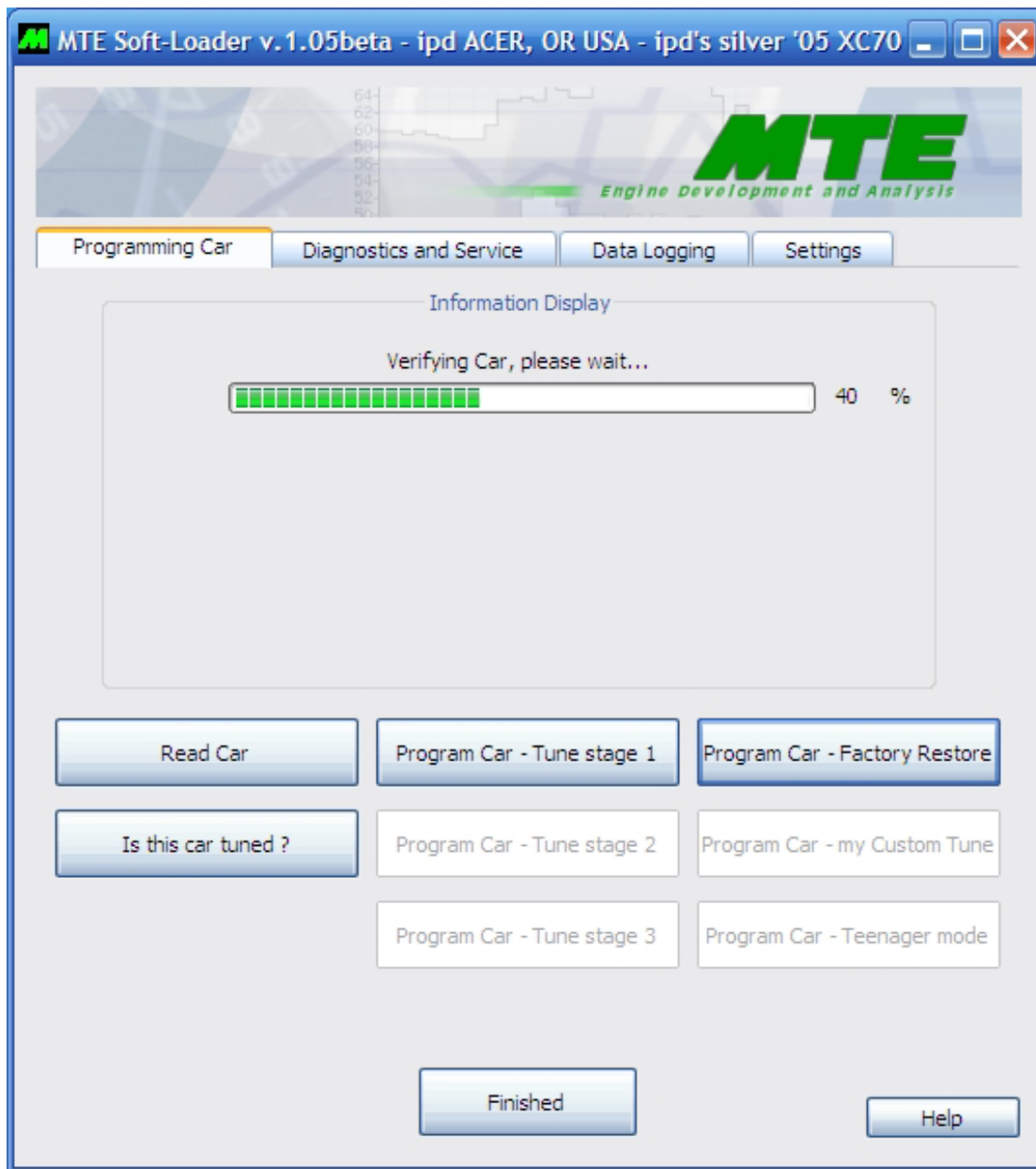


Screen Shot 2

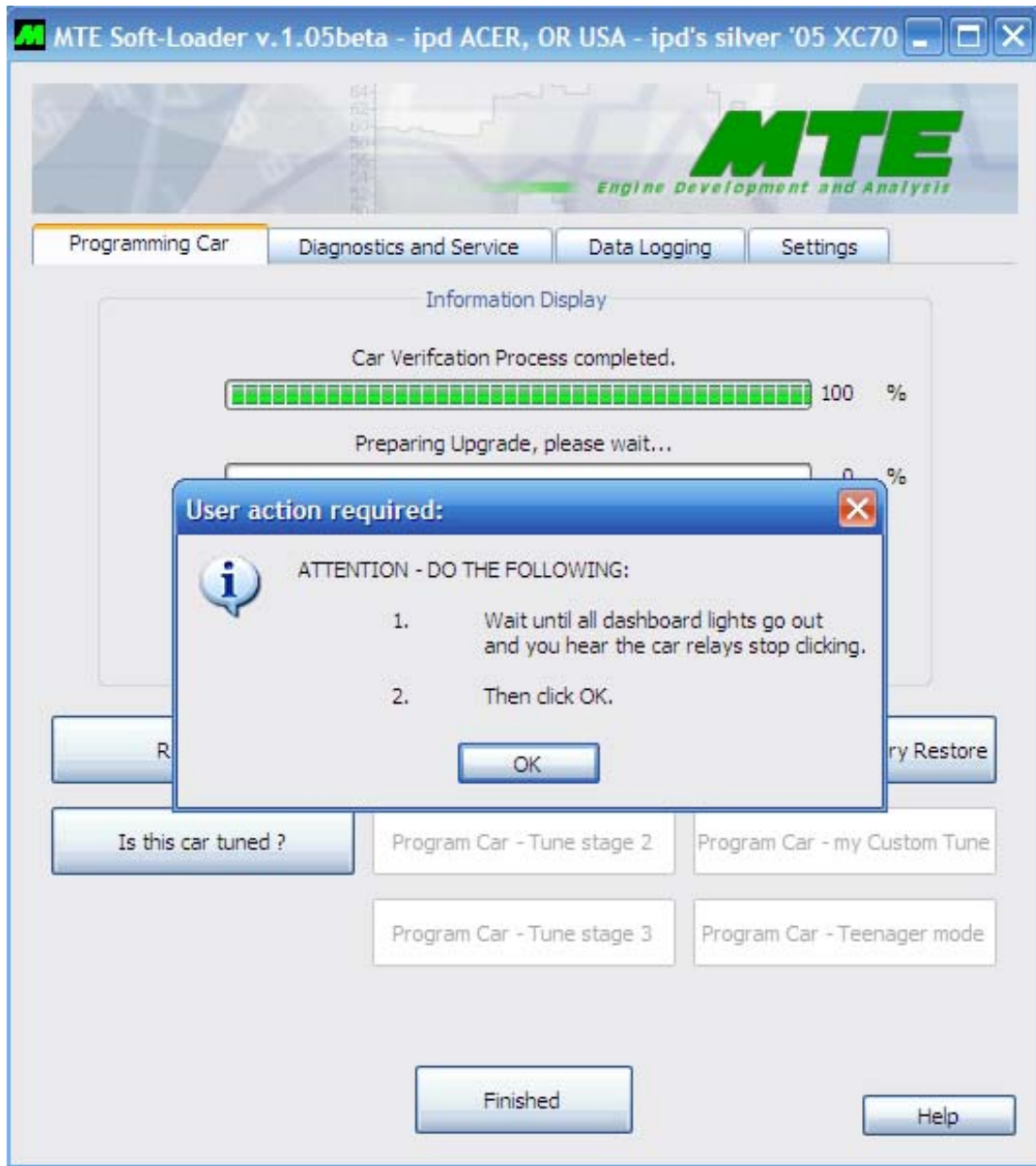
First instruction after starting the upgrade process. This will begin the verification process that ensures the upgrade we created for your car is correct.



Screen Shot 3
The verification process takes about 30 seconds.

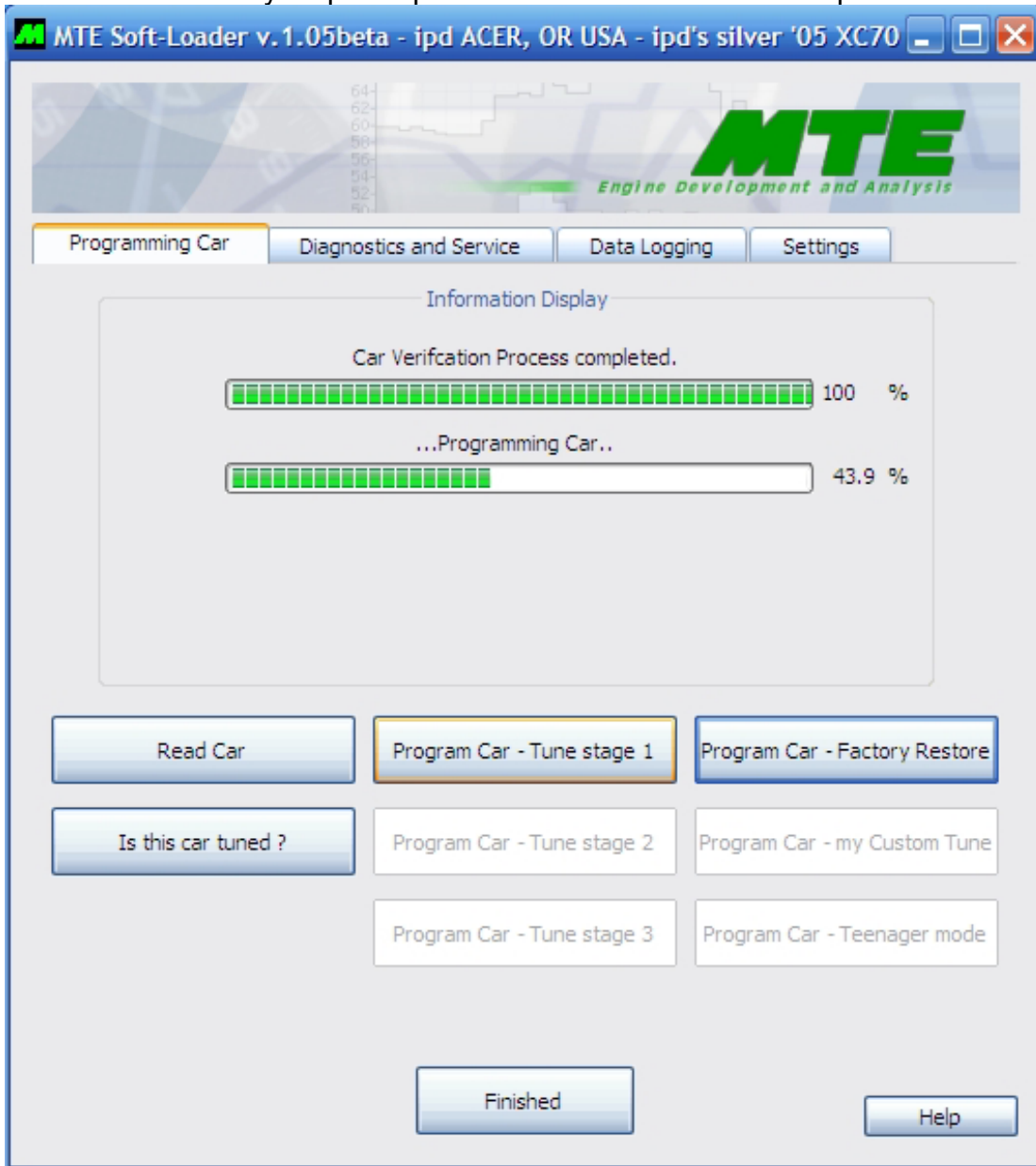


Screen shot 4:
When verification reaches 100% you will get the following message. Click OK
to begin soft loading.



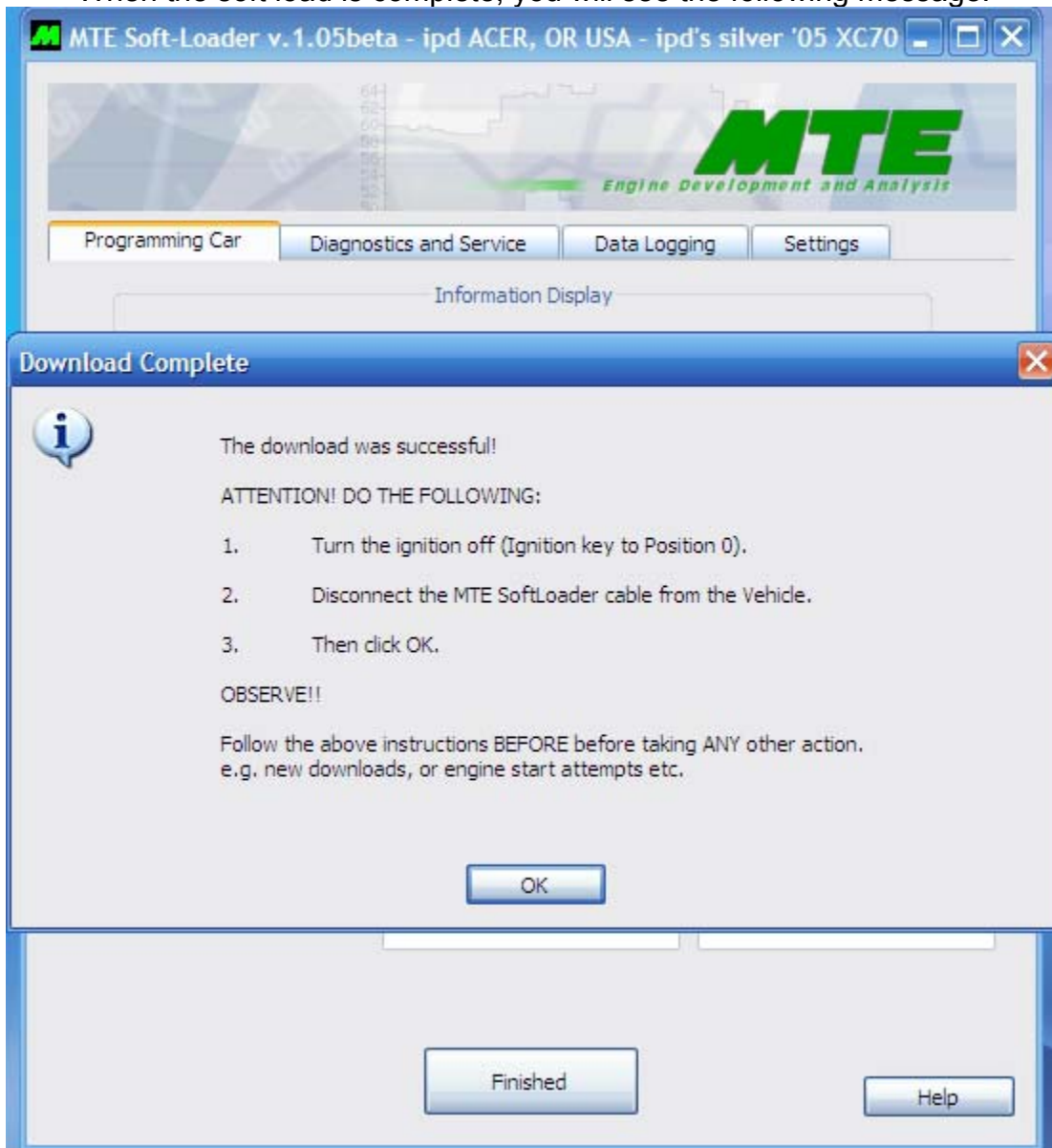
Screen Shot 5
Soft loading progress bar, generally takes about 10-15 minutes and may

momentarily stop for up to a minute or two. Please be patient.



Screen Shot 6

When the soft load is complete, you will see the following message.



Tips for viewing your data logging files in EXCEL using a tab delaminated format

Depending on the default settings in your EXCEL program, the data may not display correctly.

Click on the 'A' column to select the full data range. Go to Data->Text To Columns. Clear the 'Tab' delimiter check-box and select ';' and complete the dialogs. You'll then have the individual values in separate columns.

To view the numerical data graphically:

1. You double click the file. ... it opens in excel. (do not click anywhere in the data field)
2. Click the diagram icon in the button field (just below the menus, it's an icon of a graph with 3 bars blue,yellow, and red) ... a diagram wizard pops up.
3. Click "XY scatter", choose the picture with the smooth lines without data points,
- 4 Click next, next, next, finish

Now you have the graph. (if you make a long data log you may need to zoom in on the x-axis to read the details)
Now you can right-click the axis to change the min and max values (gives you the possibility to zoom in and out as you please)

Optional Format:

- 5 right-click on the highest line in the diagram (this is rpm) ... a drop down pops up
- 6 choose format data series ... a dialog pops up
- 7 choose the axis tab
- 8 choose "secondary axis"
- 9 click OK

Now the scales are more readable.